

CORPORATE FACT SHEET

WHO
WE
ARE

DEPENDABLE
EXPERIENCED
RESPONSIBLE
WISE

TRUSTWORTHY
ENERGETIC
STABLE



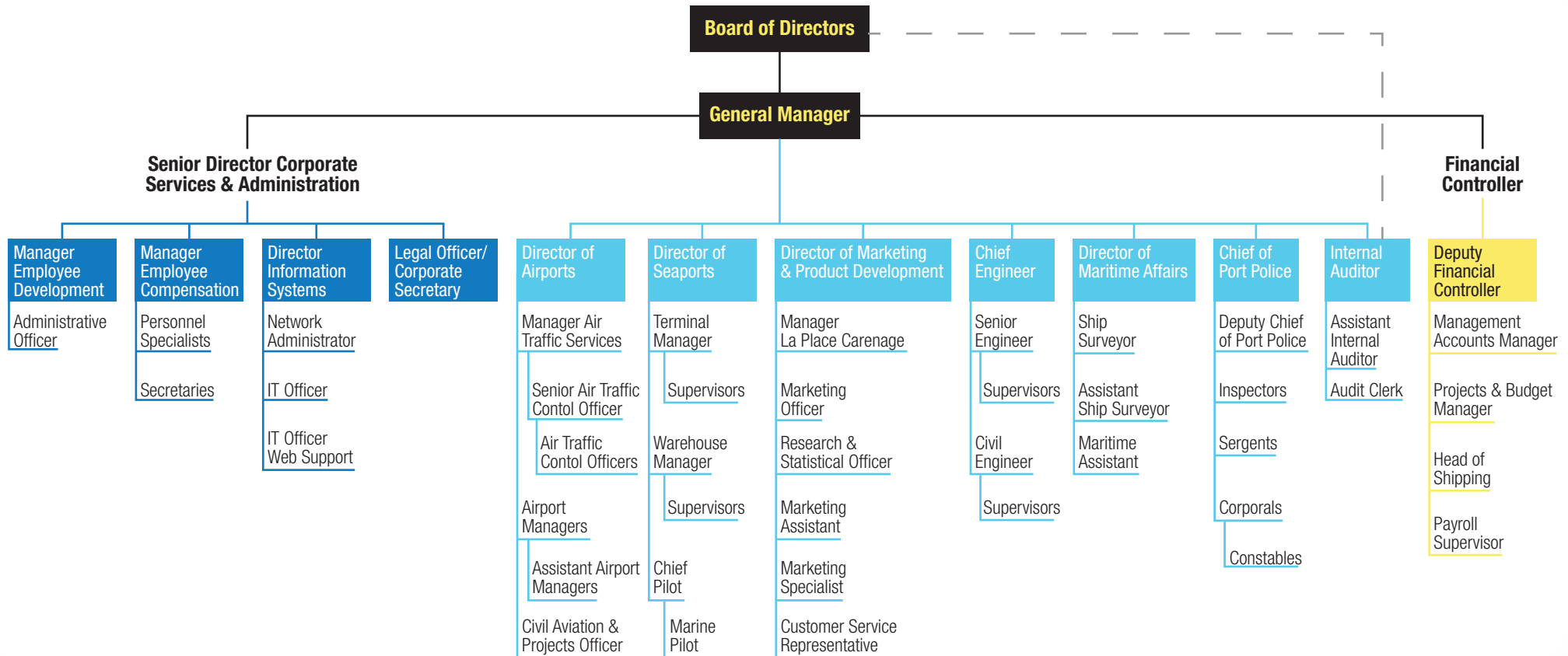
The Saint Lucia Air and Sea Ports Authority (SLASPA) was established by an Act of Parliament, No 10 of 1983. This Act brought together the Civil Aviation Department of the Ministry of Communications and Works and the Port Authority. The Saint Lucia Air and Sea Ports Authority is responsible for managing and providing a high level of quality service at the main ports of entry to the island.

SLASPA is managed by a team of professionals headed by a General Manager, and reports to the Council, which comprises ten (10) persons appointed by Government.



MANOEL STREET, P.O. BOX 651, CASTRIES
TEL: (758)452 2893/4 & 453-0437
MARKETINGDEPARTMENT@SLASPA.COM
WWW.SLASPA.COM

HOW WE ARE ORGANIZED



OUR FACILITIES

Our facilities include:

- George FL Charles Airport
- Hewanorra International Airport
- Vigie Lighthouse
- Castries Seaport
- Vieux Fort Seaport
- La Place Carenage Duty Free Shopping Mall
- Moule a Chic Lighthouse
- Rodney Bay Marina – Port Office
- Marigot Bay – Port Office
- Main Headquarters Buildings, Manoel Street, Castries

OUR SERVICES

SLASPA is committed to providing the following services.

Seaports:

- Marine services: pilotage, towage, mooring;
- Stevedoring, cargo handling and storage services;
- Trans-shipment cargo handling services;
- Ship and cargo services;
- Passenger facilitation for: cruise and ferry passengers;
- Concessionaire and tenant management services:
La Place Carenage and Ferry Terminal;
- Rental of advertising spaces.

Airports:

- Air traffic management services;
- Flight information;
- Passenger facilitation for departing, arriving and in-transit passengers;
- Meet and Greet Services;
- Concessionaire and tenant management services;
- VIP/CIP Lounge management;
- Rental of advertising spaces.

FACTS & FIGURES

No of Employees	397
Cargo Throughput	Seaport: 30,648 TEUS Airports: 3,022,726 kg
Aircraft movement	36,883
Airline Passengers	791,273
Cruise Calls	380
Cruise Passengers	670,043
Ferry Calls	154
Ferry Passengers	59,289
Yacht Calls (Rodney Bay and Marigot Bay Marinas)	8,446
Yacht Passengers (Rodney Bay and Marigot Bay Marinas)	42,750