



SLASPA

SAINT LUCIA AIR AND SEA PORTS AUTHORITY

STATISTICAL DIGEST 2008/2009



STATISTICAL DIGEST 2008/09

TABLE OF CONTENTS

PORT CASTRIES

	Page
Table 1.109 Monthly Container Statistics at Port Castries - 2008	4
Table 1.209 Monthly Container Statistics at Port Castries - 2009	5
Table 1.309 Container Traffic Landed and Loaded at Port Castries - 2008/2009	6
Table 1.409 Monthly Cargo Tonnages by Type at Port Castries - 2008	7
Table 1.509 Monthly Cargo Tonnages by Type at Port Castries - 2009	8
Table 1.609 Vessel Statistics by Type at Port Castries - 2008	9
Table 1.709 Vessel Statistics by Type at Port Castries - 2009	10
Table 1.809 Five (5) year Comparison of Container Throughput	11
Chart 1.109 Graph showing Comparison of Container Throughput 2003 - 2009	12

CRUISE ACTIVITY

Table 3.109 Cruise Calls & Passenger Arrivals 2008/2009	13
Chart 1.209 Graph showing Cruise (Intransit) Passenger Arrivals 2008/2009	14
Chart 1.309 Graph showing Cruise Calls 2008/2009	15
Table 3.209 Ferry Calls and Passenger Arrivals 2008/2009	16
Chart 1.609 Graph showing Ferry Calls and Passenger Arrivals 2008/2009	17
Table 3.309 Cruise Calls & Passenger Arrivals by Shipping Line 2008/2009	18

RODNEY BAY MARINA

Table 1.1109 Yacht Traffic at Rodney Bay Marina 2008/2009	19
Chart 1.409 Graph showing comparison of Passenger Traffic 2008/2009	20
Chart 1.509 Graph showing comparison of Yacht Calls 2008/2009	20

PORT VIEUX FORT

Table 1.1209	Container Statistics at Port Vieux Fort - 2008	21
Table 1.1309	Container Statistics at Port Vieux Fort - 2009	22
Table 1.1409	Monthly General Cargo by Type - 2008	23
Table 1.1509	Monthly General Cargo by Type - 2009	24
Table 1.1609	Vessel Statistics by Type - 2008	25
Table 1.1709	Vessel Statistics by Type - 2009	26
Table 1.1809	Total Cargo Traffic: Port Castries & Port Vieux Fort 2003 - 2009	27

AIRPORTS

George FL Charles Airport

Table 2.209	Monthly Aircraft Movements by Type at George F L Charles Airport - 2008/09	28
Table 2.409	Monthly Aircraft Movements at George F L Charles Airport - 2008/2009	29
Table 2.609	Passenger Traffic At George F L Charles Airport - 2009	30
Chart 2.309	Graph showing Passenger Traffic at George F L Charles Airport - 2003 - 2009	31
Table 2.909	Cargo Traffic at George F L Charles Airport - 2009	32
Chart 2.409	Graph showing Cargo Traffic at George F L Charles Airport 2009	33

Hewanorra International Airport

Table 2.109	Monthly Aircraft Movements by Type at Hewanorra Int'l Airport - 2009	34
Table 2.309	Monthly Aircraft Movements at Hewanorra Int'l Airport - 2008/2009	35
Table 2.509	Passenger Traffic At Hewanorra Int'l Airport - 2009	36
Chart 2.109	Graph showing Passenger Traffic at Hewanorra Int'l Airport - 2003 - 2009	37
Table 2.809	Cargo Traffic at Hewanorra International Airport - 2009	38
Chart 2.209	Graph showing Cargo Traffic at Hewanorra International Airport 2003/2009	39
Table 2.1109	Traffic at Hewanorra International Airport - 2003 - 2009	40
Table 2.1209	Traffic at George F L Charles Airport - 2003 - 2009	41
Table 2.709	Total Passenger Traffic at Hewanorra Int'l Airport & George F L Charles Airport	42
Table 2.1009	Cargo Traffic at George F L Charles and Hewanorra Int'l Airport - 2009	42

SAINT LUCIA AIR & SEA PORTS AUTHORITY

Monthly Container Statistics at Port Castries - (2008)

TABLE 1:109

INBOUND/OUTBOUND

MONTH		DOMESTIC				TRANSHIPMENT				TOTALS				LANDED/LOADED		TONNAGE
		20 FT		40 FT		20 FT		40 FT		20 FT		40 FT		BOXES	TEUS	
		EMPTY	FULL	EMPTY	FULL	EMPTY	FULL	EMPTY	FULL	EMPTY	FULL	EMPTY	FULL			
JANUARY	IN	1	374	2	441	0	6	0	28	1	380	2	469	852	1,323	28,102
	OUT	470	30	595	16	0	2	1	9	470	32	596	25	1,123	1,744	537
FEBRUARY	IN	4	478	3	445	0	42	0	32	4	520	3	477	1,004	1,484	32,839
	OUT	447	29	548	7	0	43	7	32	447	72	555	39	1,113	1,707	839
MARCH	IN	1	350	25	480	0	0	0	0	1	350	25	480	856	1,361	38,092
	OUT	406	34	382	14	0	0	0	0	406	34	382	14	836	1,232	508
APRIL	IN	0	532	0	531	0	14	0	8	0	546	0	539	1,085	1,624	27,719
	OUT	390	54	562	23	0	13	0	8	390	67	562	31	1,050	1,643	633
MAY	IN	0	473	0	535	0	0	0	0	0	473	0	535	1,008	1,543	33,225
	OUT	527	34	473	20	0	0	0	0	527	34	473	20	1,054	1,547	2,542
JUNE	IN	2	469	14	495	0	26	0	23	2	495	14	518	1,029	1,561	29,509
	OUT	411	40	534	22	0	26	6	17	411	66	540	39	1,056	1,635	1,081
JULY	IN	0	529	11	474	6	12	13	10	6	541	24	484	1,055	1,563	33,878
	OUT	388	37	445	33	3	12	14	8	391	49	459	41	940	1,440	1,096
AUGUST	IN	3	397	2	431	0	1	0	4	3	398	2	435	838	1,275	32,503
	OUT	521	26	371	17	0	1	0	4	521	27	371	21	940	1,332	683
SEPTEMBER	IN	27	456	3	496	0	1	0	0	27	457	3	496	983	1,482	31,631
	OUT	263	30	408	16	1	5	0	1	264	35	408	17	724	1,149	861
OCTOBER	IN	0	436	8	446	11	27	15	44	11	463	23	490	987	1,500	42,738
	OUT	289	30	343	36	0	28	0	36	289	58	343	72	762	1,177	4,683
NOVEMBER	IN	0	407	1	567	0	0	0	0	0	407	1	567	975	1,543	36,114
	OUT	465	32	564	12	11	0	20	0	476	32	584	12	1,104	1,700	1,355
DECEMBER	IN	0	518	0	606	0	0	0	0	0	518	0	606	1,124	1,730	39,225
	OUT	427	17	603	16	0	0	0	0	427	17	603	16	1,063	1,682	1,345
TOTALS	IN	38	5,419	69	5,947	17	129	28	149	55	5,548	97	6,096	11,796	17,989	405,575
	OUT	5,004	393	5,828	232	15	130	48	115	5,019	523	5,876	347	11,765	17,988	16,163
	Through	5,042	5,812	5,897	6,179	32	259	76	264	5,074	6,071	5,973	6,443	23,561	35,977	421,738

SAINT LUCIA AIR & SEA PORTS AUTHORITY

Monthly Container Statistics at Port Castries - (2009)

TABLE 1:209

INBOUND/OUTBOUND

MONTH		DOMESTIC				TRANSHIPMENT				TOTALS				LANDED/LOADED		TONNAGE
		20 FT		40 FT		20 FT		40 FT		20 FT		40 FT		BOXES	TEUS	
		EMPTY	FULL	EMPTY	FULL	EMPTY	FULL	EMPTY	FULL	EMPTY	FULL	EMPTY	FULL			
JANUARY	IN	0	382	0	395	0	0	0	2	0	382	0	397	779	1,176	25,977
	OUT	521	25	544	21	0	0	0	2	521	25	544	23	1,113	1,680	1,339
FEBRUARY	IN	1	375	15	445	0	0	0	0	1	375	15	445	836	1,296	27,779
	OUT	394	26	385	18	0	0	0	0	394	26	385	18	823	1,226	1,125
MARCH	IN	0	462	0	519	0	0	0	0	0	462	0	519	981	1,500	32,826
	OUT	406	31	523	16	0	0	0	0	406	31	523	16	976	1,515	1,173
APRIL	IN	0	354	0	353	0	0	0	0	0	354	0	353	707	1,060	23,489
	OUT	333	27	369	20	0	0	0	0	333	27	369	20	749	1,138	1,105
MAY	IN	0	415	3	386	0	10	0	11	0	425	3	397	825	1,225	25,920
	OUT	395	19	346	38	0	10	0	11	395	29	346	49	819	1,214	1,823
JUNE	IN	0	409	6	390	0	1	0	0	0	410	6	390	806	1,202	26,061
	OUT	349	26	365	19	0	0	0	0	349	26	365	19	759	1,143	1,048
JULY	IN	1	419	7	328	0	0	0	0	1	419	7	328	755	1,090	24,689
	OUT	343	34	285	18	0	0	0	0	343	34	285	18	680	983	1,279
AUGUST	IN	2	381	14	383	0	0	0	0	2	381	14	383	780	1,177	26,085
	OUT	315	23	287	14	0	0	0	0	315	23	287	14	639	940	840
SEPTEMBER	IN	0	415	0	384	0	0	0	0	0	415	0	384	799	1,183	25,738
	OUT	452	23	464	16	0	0	0	0	452	23	464	16	955	1,435	958
OCTOBER	IN	0	409	1	398	0	35	2	37	0	444	3	435	882	1,320	28,361
	OUT	272	22	269	20	0	35	2	37	272	57	271	57	657	985	2,771
NOVEMBER	IN	0	424	0	452	0	2	0	0	0	426	0	452	878	1,330	29,550
	OUT	297	40	387	46	0	2	0	0	297	42	387	46	772	1,205	2,350
DECEMBER	IN	0	396	0	537	0	6	0	10	0	402	0	547	949	1,496	33,610
	OUT	461	36	537	34	0	8	0	10	461	44	537	44	1,086	1,667	2,437
TOTALS	IN	4	4,841	46	4,970	0	54	2	60	4	4,895	48	5,030	9,977	15,055	330,085
	OUT	4,538	332	4,761	280	0	55	2	60	4,538	387	4,763	340	10,028	15,131	18,248
Total Throughput		4,542	5,173	4,807	5,250	0	109	4	120	4,542	5,282	4,811	5,370	20,005	30,186	348,333

SAINT LUCIA AIR & SEA PORTS AUTHORITY

Container Traffic Landed and Loaded (2008 - 2009)

TABLE 1:309

PORT CASTRIES

MONTH	DOMESTIC (Teus)			TRANSHIPMENT (Teus)			TOTALS (Teus)			TOTAL TONNAGE (Short)		
	2008	2009	GROWTH (%)	2008	2009	GROWTH (%)	2008	2009	GROWTH (%)	2008	2009	GROWTH (%)
JANUARY	2,983	2,848	(4.5)	84	8	-90%	3,067	2,856	(6.9)	29,348	27,316	(6.9)
FEBRUARY	2,962	2,522	(14.9)	227	0	-100%	3,189	2,522	(20.9)	33,580	28,904	(13.9)
MARCH	2,594	3,015	16.2	0	0	0%	2,594	3,015	16.2	30,622	33,999	11.0
1ST QUARTER	8,539	8,385	(1.8)	311	8	-97%	8,850	8,393	(5.2)	93,550	90,219	(3.6)
APRIL	3,208	2,198	(31.5)	59	0	-100%	3,267	2,198	(32.7)	37,160	24,594	(33.8)
MAY	3,090	2,375	(23.1)	0	64	100%	3,090	2,439	(21.1)	35,857	27,743	(22.6)
JUNE	3,052	2,344	(23.2)	144	1	-99%	3,196	2,345	(26.6)	34,188	27,109	(20.7)
2ND QUARTER	9,350	6,917	(26.0)	203	65	-68%	9,553	6,982	(26.9)	107,205	79,446	(25.9)
JULY	2,880	2,073	(28.0)	123	0	100%	3,003	2,073	(31.0)	35,593	25,968	(27.0)
AUGUST	2,589	2,117	(18.2)	18	0	-100%	2,607	2,117	(18.8)	28,791	26,925	(6.5)
SEPTEMBER	2,622	2,618	(0.2)	9	0	-100%	2,631	2,618	(0.5)	33,254	26,696	(19.7)
3RD QUARTER	8,091	6,808	(15.9)	150	0	-100%	8,241	6,808	(17.4)	97,638	79,589	(18.5)
OCTOBER	2,421	2,079	(14.1)	256	226	-12%	2,677	2,305	(13.9)	32,869	31,132	(5.3)
NOVEMBER	3,192	2,531	(20.7)	51	4	-92%	3,243	2,535	(21.8)	33,300	31,900	(4.2)
DECEMBER	3,412	3,109	(8.9)	0	54	100%	3,412	3,163	(7.3)	38,950	36,047	(7.5)
4TH QUARTER	9,025	7,719	(14.5)	307	284	-7%	9,332	8,003	(14.2)	105,119	99,079	(5.7)
TOTALS	35,005	29,829	(14.8)	971	357	-63%	35,976	30,186	(16.1)	403,512	348,333	(13.7)

SAINT LUCIA AIR & SEA PORTS AUTHORITY

Monthly Cargo Tonnages by Type at Port Castries - (2008)

TABLE 1:409

INBOUND/OUTBOUND

(Short Tons)

MONTH	TOTALS	DOMESTIC			TRANSHIPMENT		DRY BULK (Aggregates)	PETROLEUM PRODUCTS	MOLASSES DISCHARGED AT CUL DE SAC
		BANANAS	B'BULK	CONT'SED	B/BULK	CONT'SED			
JANUARY	IN	44,689	0	16,691	27,053	0	945	0	0
	OUT	1,429	0	79	1,035	0	315	0	0
FEBRUARY	IN	42,721	0	11,495	29,636	0	1,590	0	0
	OUT	2,435	0	81	749	0	1,605	0	0
MARCH	IN	44,495	0	14,776	29,545	0	0	174	0
	OUT	1,177	0	100	1,077	0	0	0	0
APRIL	IN	41,138	0	5,242	35,446	0	450	0	0
	OUT	2,270	0	121	1,714	0	435	0	0
MAY	IN	45,509	0	11,024	34,485	0	0	0	0
	OUT	1,416	0	44	1,372	0	0	0	0
JUNE	IN	44,988	0	11,140	31,444	134	1,169	260	0
	OUT	2,855	0	196	1,379	269	885	0	126
JULY	IN	41,671	0	8,133	33,038	0	500	0	0
	OUT	2,160	0	105	1,635	0	420	0	0
AUGUST	IN	37,338	0	9,480	27,514	0	149	0	195
	OUT	1,236	0	108	979	0	149	0	0
SEPTEMBER	IN	47,208	0	14,161	31,962	9	20	0	0
	OUT	1,397	0	125	1,162	0	110	0	0
OCTOBER	IN	38,012	0	8,531	27,756	0	1,725	0	0
	OUT	3,765	0	377	1,888	0	1,500	0	0
NOVEMBER	IN	41,287	0	9,001	32,286	0	0	0	0
	OUT	1,155	0	141	1,014	0	0	0	0
DECEMBER	IN	45,592	0	2,488	38,114	0	0	4,990	0
	OUT	918	0	82	836	0	0	0	0
TOTALS:	IN	514,648	0	122,162	378,279	143	6,548	5,424	195
	OUT	22,213	0	1,559	14,840	269	5,419	0	126

SAINT LUCIA AIR & SEA PORTS AUTHORITY

Monthly Cargo Tonnages by Type at Port Castries - (2009)

TABLE 1:509

INBOUND/OUTBOUND

(Short Tons)

MONTH	TOTALS	DOMESTIC			TRANSHIPMENT		DRY BULK (Aggregates)	PETROLEUM PRODUCTS	MOLASSES DISCHARGED AT CUL DE SAC	
		BANANAS	B'BULK	CONT'SED	B/BULK	CONT'SED				
JANUARY	IN	36,692	0	10,715	25,889	0	88	0	0	0
	OUT	1,534	0	185	1,251	10	88	0	0	0
FEBRUARY	IN	14,571	0	10,471	2,777	0	0	0	0	1,323
	OUT	1,234	0	109	1,125	0	0	0	0	0
MARCH	IN	41,787	0	8,961	32,826	0	0	0	0	0
	OUT	1,309	0	136	1,173	0	0	0	0	0
APRIL	IN	28,685	0	5,196	23,489	0	0	0	0	0
	OUT	1,167	0	62	1,105	0	0	0	0	0
MAY	IN	34,924	0	6,585	25,920	0	576	0	210	1,633
	OUT	2,447	0	48	1,823	0	576	0	0	0
JUNE	IN	37,922	0	11,861	26,046	0	15	0	0	0
	OUT	1,181	0	133	1,048	0	0	0	0	0
JULY	IN	38,181	0	9,633	24,689	0	0	3,859	0	0
	OUT	1,446	0	167	1,279	0	0	0	0	0
AUGUST	IN	35,060	0	4,565	26,085	0	0	4,410	0	0
	OUT	924	0	80	840	4	0	0	0	0
SEPTEMBER	IN	35,518	0	8,738	25,738	0	0	0	0	1,042
	OUT	1,046	0	88	958	0	0	0	0	0
OCTOBER	IN	45,251	0	8,404	26,698	0	1,663	8,269	0	217
	OUT	2,916	0	145	1,108	0	1,663	0	0	0
NOVEMBER	IN	36,149	0	5,734	29,550	0	38	0	0	827
	OUT	2,529	0	141	2,350	0	38			
DECEMBER	IN	42,586	0	8,429	33,007	0	603	0	0	547
	OUT	2,487	0	50	1,794	0	643	0	0	0
TOTALS:	IN	427,326	0	99,292	302,714	0	2,983	16,538	210	5,589
	OUT	20,220	0	1,344	15,854	14	3,008	0	0	0

SAINT LUCIA AIR & SEA PORTS AUTHORITY

VESSEL STATISTICS BY TYPE (2008)

TABLE 1.609

PORT: CASTRIES

TYPE OF VESSEL/SHIP	TOTAL GROSS TONNAGE (GRT)	TOTAL NET TONNAGE (NRT)	AVERAGE GROSS TONNAGE	NUMBER OF VESSEL CALLS
CARGO VESSELS UNDER 100 GRT	2,659	1,628	51.13	52
CONVENTIONAL BREAK BULK VESSELS	176,086	210,584	1,397.51	126
CONTAINER SHIPS	2,074,164	939,844	7,653.74	271
COMBINATION SHIPS	470,731	248,138	9,230.02	51
PRODUCT TANKERS	27,547	10,657	4,591.17	6
CAR & TRUCK CARRIERS	741,751	227,499	49,450.07	15
TUG & BARGE	9,580	2,314	2,395.00	4
TUGS	3,066	1,593	306.60	10
CRUISE SHIPS: Regional	136,579	43,983	754.58	181
CRUISE SHIPS: International	24,294,800	15,210,189	77,126.35	315
OTHERS	6,205	1,773	1,034.17	6
NAVAL SHIPS & COAST GUARD	35,035	15,264	3,503.50	10
TOTALS	27,978,203	16,913,466	26,722.26	1,047

SAINT LUCIA AIR & SEA PORTS AUTHORITY

VESSEL STATISTICS BY TYPE (2009)

TABLE 1.709

PORT: CASTRIES

TYPE OF VESSEL/SHIP	TOTAL GROSS TONNAGE (GRT)	TOTAL NET TONNAGE (NRT)	AVERAGE GROSS TONNAGE	NUMBER OF VESSEL CALLS
CARGO VESSELS UNDER 100 GRT	1,569	856	65.38	24
CONVENTIONAL BREAK BULK VESSELS	65,588	31,861	1,490.64	44
CONTAINER SHIPS	861,171	401,399	7,900.65	109
COMBINATION SHIPS	214,152	114,609	9,310.96	23
PRODUCT TANKERS	14,218	4,847	4,739.33	3
CAR & TRUCK CARRIERS	249,771	89,254	49,954.20	5
TUG & BARGE			0.00	
TUGS	3,463	1,059	230.87	15
CRUISE SHIPS: Ferry	53,569	16,473	799.54	67
CRUISE SHIPS: International	15,083,287	9,092,574	67,638.06	223
OTHERS	0	0	0.00	0
NAVAL SHIPS & COAST GUARD	5,710	3,720	1,142.00	5
TOTALS	16,552,498	9,756,652	31,954.63	518

Updated until May

SAINT LUCIA AIR & SEA PORTS AUTHORITY

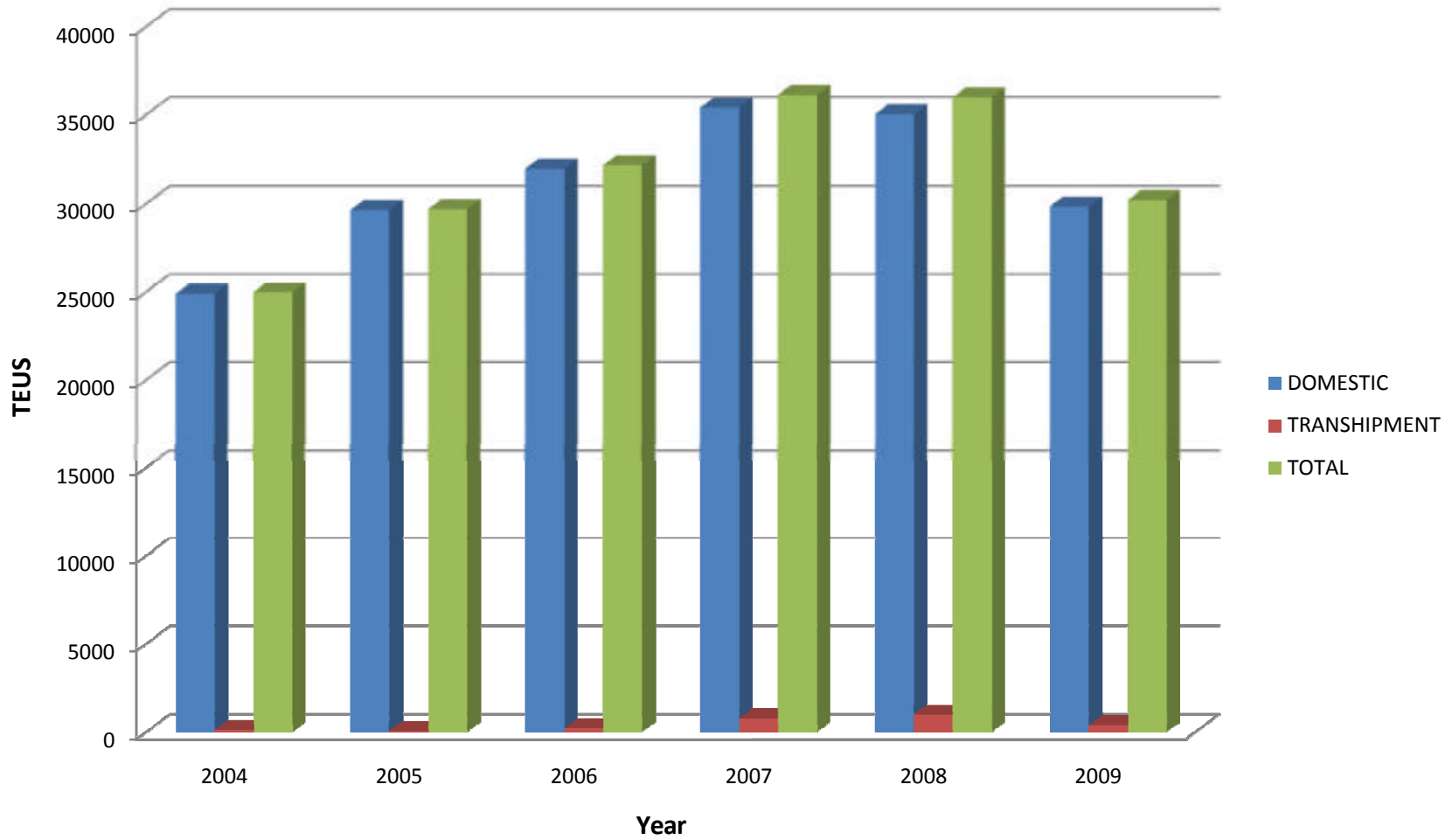
Five (5) Year Comparison of Container Throughput at Port Castries 2004- 2009

TABLE 1:809

YEAR	DOMESTIC	GROWTH (%)	TRANSHIPMENT	GROWTH (%)	TOTAL	GROWTH (%)
2004	24,866	9.9	90	(43.0)	24,956	9.5
2005	29,625	19.1	40	(55.6)	29,665	18.9
2006	31,928	7.8	184	360.0	32,112	8.2
2007	35,384	10.8	733	298.4	36,117	12.5
2008	35,005	(1.1)	971	32.5	35,976	(0.4)
2009	29,829	(14.8)	357	(63.2)	30,186	(16.1)

2009 updated until December

Chart 1.109
Port Castries Container Throughput



2009 Updated until December

SAINT LUCIA AIR & SEA PORTS AUTHORITY

Cruise Calls and Passenger Arrivals Statistics (2008-2009)

TABLE 3.109

Month	Calls		Growth %	Intransit Passengers		Growth %	Passengers Landed		Growth %
	2008	2009		2008	2009		2008	2009	
January	52	56	8%	102,286	100,131	-2%	94	159	69%
February	43	52	21%	76,574	89,658	17%	107	127	19%
March	51	66	29%	92,312	108,392	17%	134	128	-4%
April	32	36	13%	61,622	61,213	-1%	305	78	-74%
May	8	13	63%	21,748	26,489	22%	12	9	-25%
June	6	10	67%	19,619	17,792	-9%	7	28	300%
July	7	14	100%	22,954	27,007	18%	9	36	300%
August	6	9	50%	19,659	20,890	6%	15	5	-67%
September	3	12	300%	9,323	26,774	187%	3	15	400%
October	8	17	113%	16,261	32,892	102%	21	22	5%
November	35	45	29%	70,242	78,213	11%	25	50	100%
December	64	67	5%	107,080	109,855	3%	57	55	-4%
Total	315	397	26%	619,680	699,306	13%	789	712	-10%

Chart 1.209
Port Castries Cruise Passengers
2008/2009

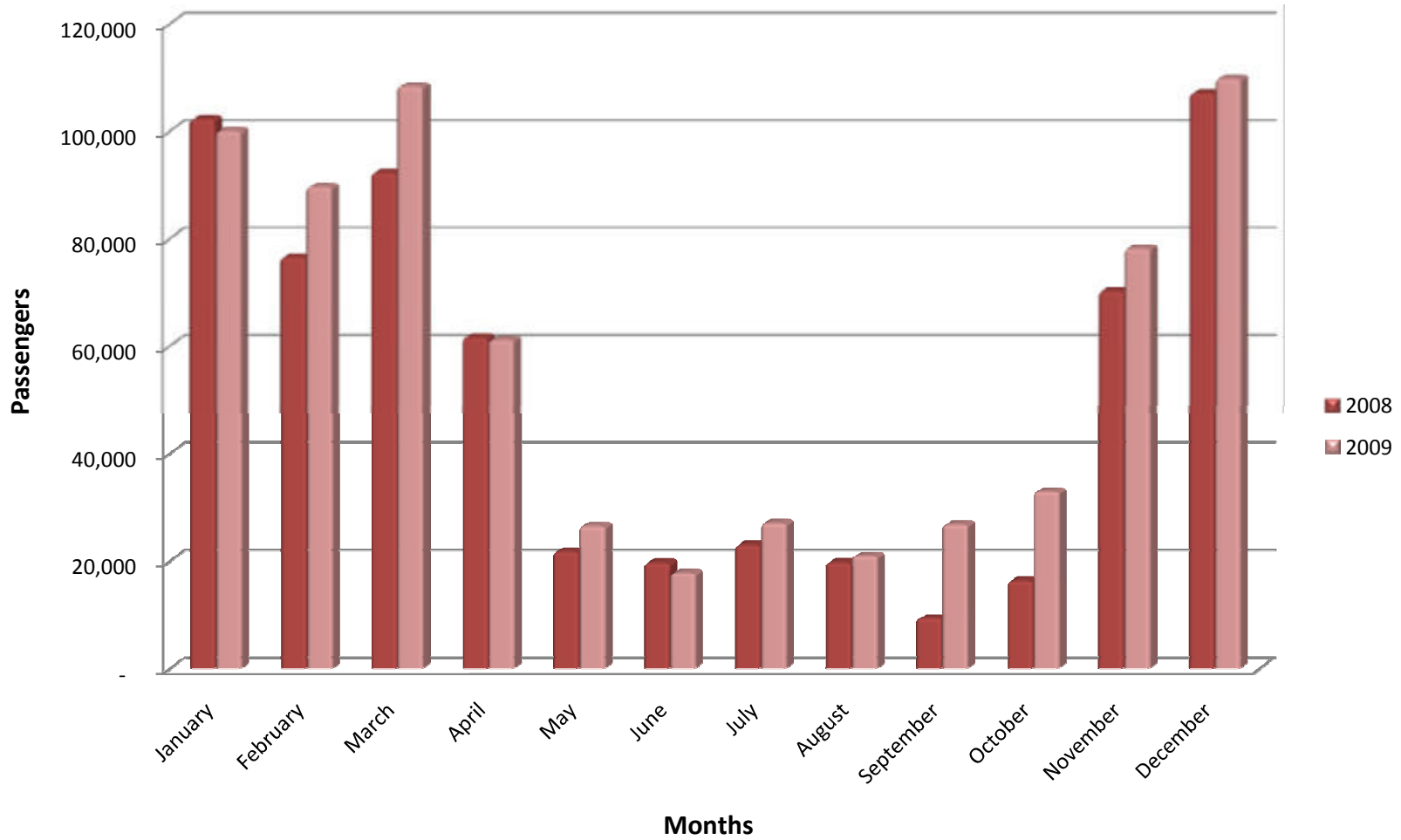
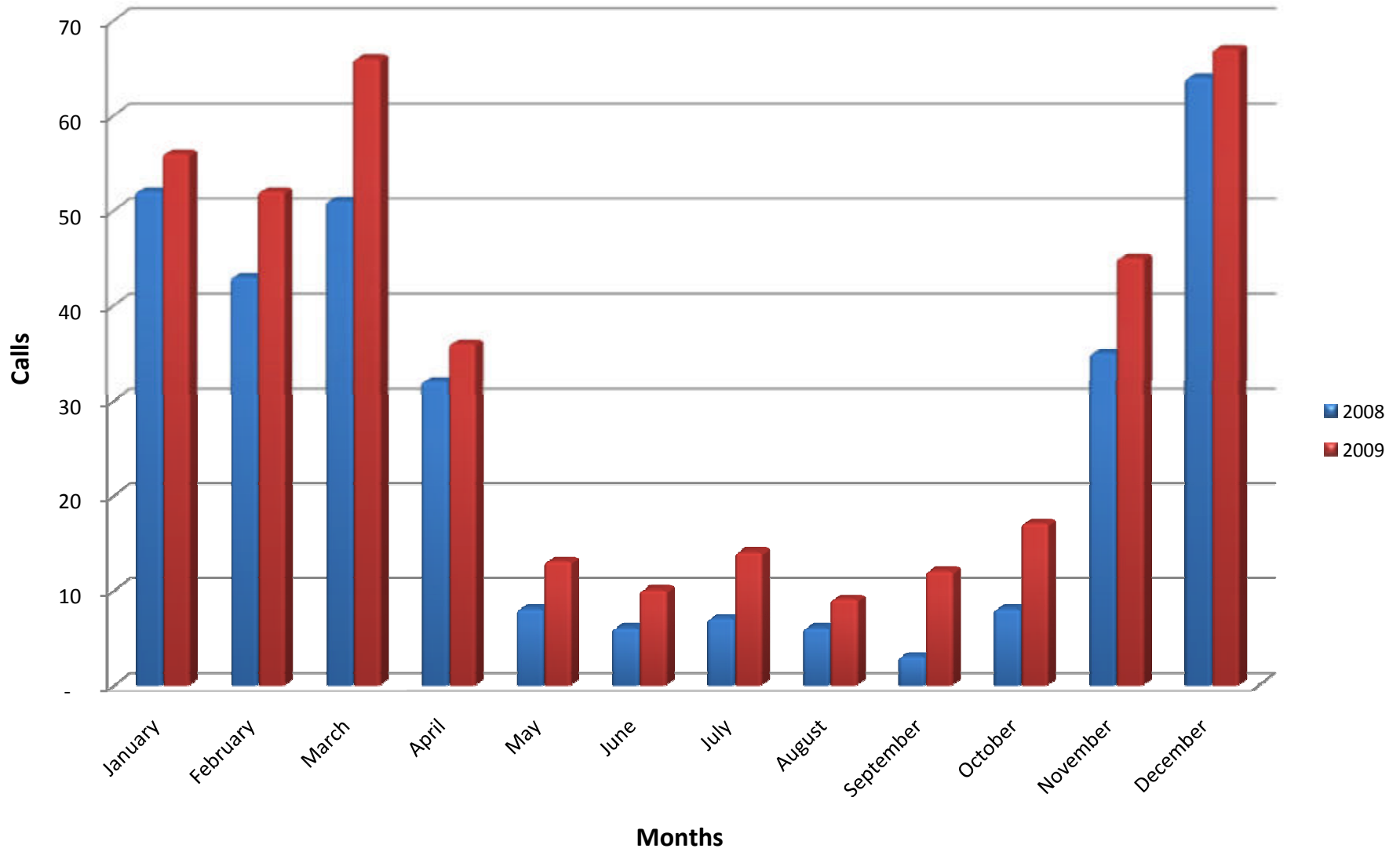


Chart 1.309
Castries Cruise Calls

Port
2008/2009



SAINT LUCIA AIR & SEA PORTS AUTHORITY

Ferry Calls and Passenger Traffic Statistics (2008-2009)

TABLE 3.209

Month	Calls		Growth %	Passengers		Total		Growth %
	2008	2009		Arrivals	Departures	2009	2008	
January	16	13	-19%	1,354	2,538	3,892	4,613	-16%
February	17	13	-24%	1,717	1,287	3,004	4,723	-36%
March	19	13	-32%	1,330	1,761	3,091	6,345	-51%
April	18	14	-22%	2,743	2,698	5,441	3,697	47%
May	17	14	-18%	2,647	2,619	5,266	6,033	-13%
June	6	3	-50%	573	528	1,101	1,586	-31%
July	18	19	6%	5,259	4,321	9,580	9,568	0.1%
August	18	18	0%	5,284	6,265	11,549	11,970	-4%
September	12	12	0%	1,489	1,566	3,055	3,000	2%
October	9	8	-11%	1,661	1,288	2,949	2,988	-1%
November	16	9	-44%	1,304	1,656	2,960	4,740	-38%
December	15	17	13%	4,682	3,320	8,002	6,785	18%
Total	181	153	-15%	30,043	29,847	59,890	66,048	-9%

Chart 1.609A
Ferry Passenger Traffic

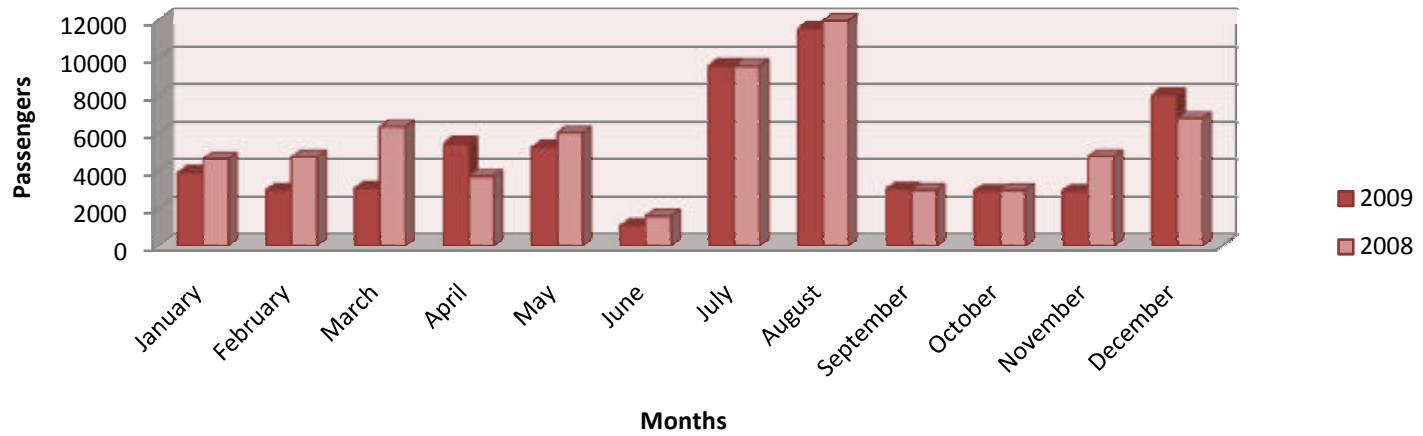
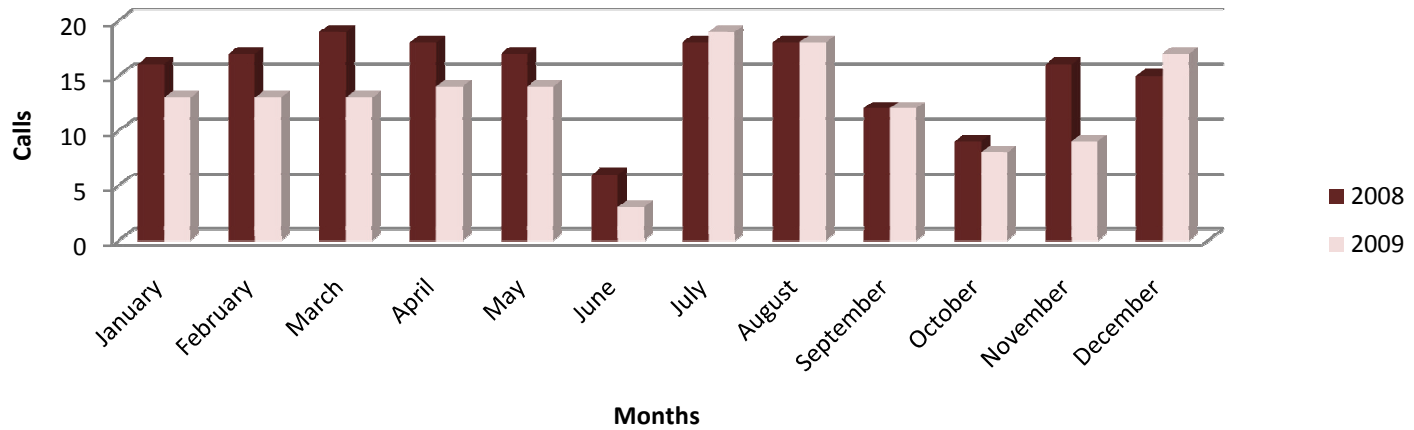


Chart 1.609B
Ferry Calls



SAINT LUCIA AIR & SEA PORTS AUTHORITY

Annual Cruise Calls and Passenger Arrivals by Operator - 2008-2009

TABLE 3.309

Operator	Calls		Passengers	
	2008	*2009	2008	*2009
Carnival Cruise Lines	42	56	120,945	169,937
Celebrity Cruise Lines	18	21	35,316	41,808
Costa Cruises	18	18	40,551	39,866
Cunard Line	16	5	33,441	10,429
Fred Olsen Cruise Lines	12	17	8,950	14,793
Holland America	16	18	22,414	25,094
Island Cruises		3		4,250
Norwegian Cruise Line	20	10	50,709	24,869
Mediterranean Shipping Cruises	4	4	6,276	5,731
Oceana Cruises	4	2	2,637	1,326
Ocean Village	15	18	26,125	30,801
Others	33	59	26,225	41,105
P&O Cruises	19	26	41,739	59,129
Princess Cruises	37	38	80,289	85,397
Pullmantur		46		35,481
Royal Caribbean	53	50	120,718	107,585
Silver Sea Cruises	8	6	3,345	1,705
Total	315	397	619,680	699,306

**2009 Updated until December*

SAINT LUCIA AIR AND SEA PORTS AUTHORITY

YACHT THROUGHPUT AT RODNEY BAY MARINA FOR 2008-2009

TABLE 1.1109

MONTH	2009				2009	2008	Growth %	2009	2008	Growth %
	< 40 FT	> 40 FT < 70 FT	> 70 FT <100 FT	>100FT	TOTAL YACHTS	TOTAL YACHTS		TOTAL PERSONS	TOTAL PERSONS	
January	249	344	8	8	609	526	15.78	2,918	2,901	0.59%
February	438	434	3	8	883	546	61.72	3,631	3,104	16.98%
March	306	353	3	3	665	464	43.32	2,722	2,378	14.47%
April	291	259	2	2	554	423	30.97	2,804	1,779	57.62%
May	314	258	1	0	573	516	11.05	4,075	2,826	44.20%
June	186	141	0	0	327	231	41.56	3,121	996	213.35%
July	208	143	0	1	352	269	30.86	2,268	1,507	50.50%
August	299	164	0	0	463	311	48.87	2,181	1,944	12.19%
September	161	78	1	0	240	107	124.30	1,213	522	132.38%
October	249	102	6	1	358	141	153.90	1,864	846	120.33%
November	217	163	4	7	391	287	36.24	1,656	1,414	17.11%
December*	351	302	20	32	705	459	53.59	3,544	2,205	60.73%
TOTAL	3,269	2,741	48	62	6,120	4,280	42.99	31,997	22,422	42.70

* December does not include ARC statistics

ARC Yachts Arrivals for December 2009 - 201 yachts

Chart 1.409
Yacht Passenger Traffic at Rodney Bay Marina

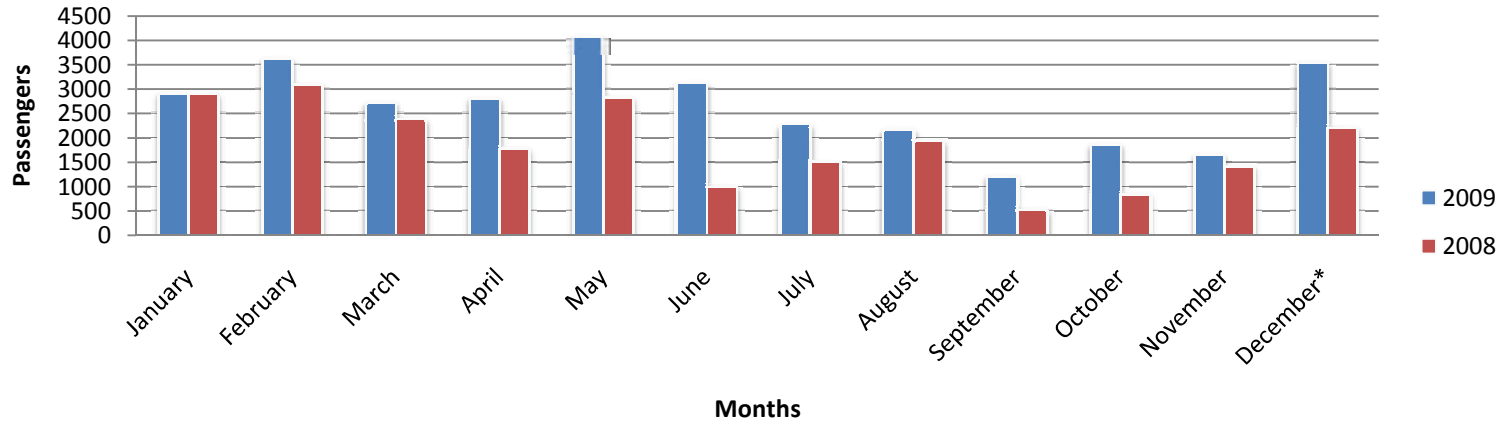
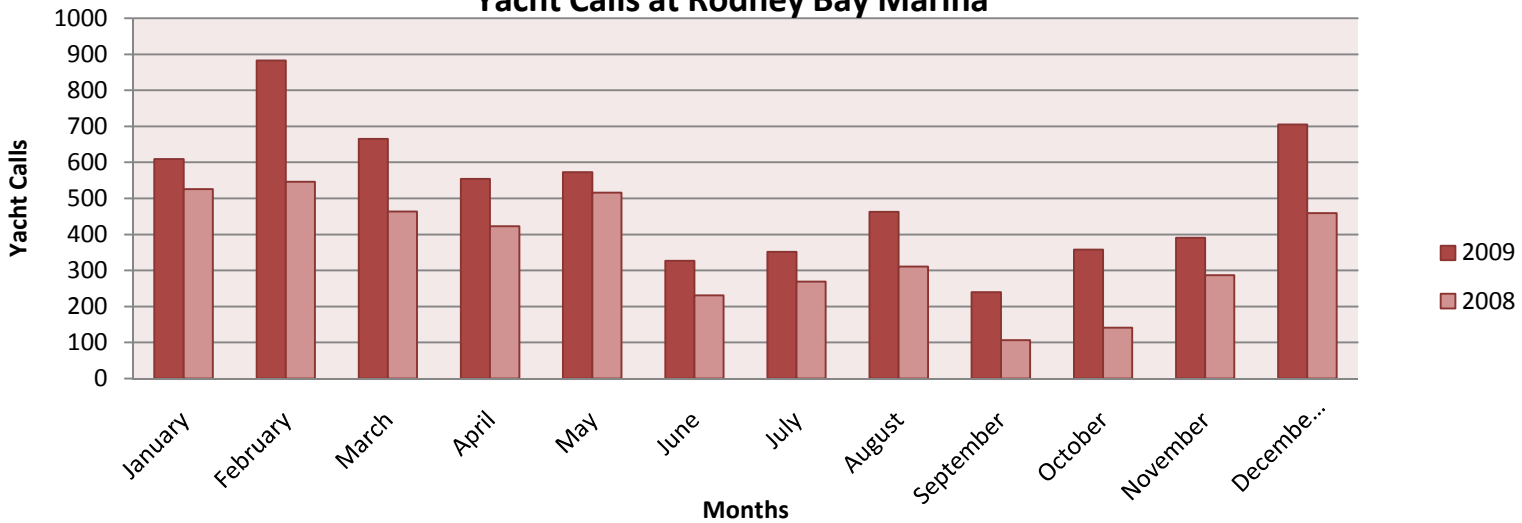


Chart 1.509
Yacht Calls at Rodney Bay Marina



December figures does not include ARC vessels

SAINT LUCIA AIR & SEA PORTS AUTHORITY
MONTHLY CONTAINER STATISTICS AT PORT VIEUX FORT - 2008

TABLE 1.1209

MONTH		VIEUX - FORT DOMESTIC				CASTRIES DOMESTIC				TRANSHIPMENT				TOTALS						Vieux Fort Domestic Tonnage	YEAR TO DATE TOTAL
		20'		40'		20'		40'		20'		40'		20'		40'		BOXES	TEUS		
		FULL	MT	FULL	MT	FULL	MT	FULL	MT	FULL	MT	FULL	MT	FULL	MT	FULL	MT				
JAN	In	81.5	0	44	0	10	0	12	0	146	46	102	32	237.5	46	158	32	473.5	663.5	4240	1326.5
	Out	60.0	27	30	20	12	0	14	0	140	32	109	23	212	59	153	43	467.0	663.0	2741	
FEB	In	127	0	52	0	25	0	32	0	185	24	211	22	337	24	295	22	678	995	5811	3294.5
	Out	51	25	28	20	25	0	32	0	195	31	218	25	271	56	278	45	650	973	3067	
MAR	In	115.0	7	86	0	36	0	35	0	247.0	95	207	76	398	102	328	76	904	1308	6792	5749
	Out	50	73.5	25	40	36	0	34	0	245.0	48	212	36	331	121.5	271	76	799.5	1146.5	2698	
APR	In	96.5	17	57.0	0	28	0	29	0	314.0	65.5	240	87	438.5	82.5	326	87	934	1347	6805	8424
	Out	68.0	45.0	25.0	62	28	0	30	0	301	42.0	226	79	397	87.0	281	141	906.0	1,328.0	2208	
MAY	In	96	32	123	0	44	0	35	0	386	64	293	154	526	96	451	154	1227	1832	8134	11968.5
	Out	84.5	58	51	27	44	0	35	0	370	140	285	110	498.5	198	371	137	1204.5	1712.5	4960	
JUNE	In	80.5	17.0	44	2	34	0	33	0	335.5	74.5	221	106	450	91.5	298	108	947.5	1,353.5	3684	14741
	Out	91.0	40	43	79	36	0	32	0	293	37	216	91	420.0	77	291	170	958.0	1,419.0	4737	
JULY	In	107.0	37	55	0	39	0	33	0	270.5	26.0	268	86	416.5	63.0	356	86	921.5	1363.5	5302	17567
	Out	68.0	78.0	46	38	39	0	34	0	282.5	39.0	245	115	389.5	117	325	153	984.5	1,462.5	4430	
AUG	In	58.0	39	47	4	20	0	21	0	190.5	56.0	171	152	268.5	95	239	156	758.5	1,153.5	3823	19853
	Out	67.0	35	19	29	20.0	0	21	0	210.0	76.5	196	97	297.0	111.5	236	126	770.5	1132.5	2788	
SEPT	In	105.5	0.5	98	7	34	0	37	0	329	99	241	136	468.5	99.5	376	143	1087	1606	7276	22791
	Out	91	44	45	17	29	0	29	0	274.5	67.5	221	101	394.5	111.5	295	118	919.0	1,332.0	4743	
OCT	In	123	20.0	65	5	48.0	0.0	53	8	362.5	33.0	307	122	533.5	53	425	135	1,146.5	1,706.5	5931	26161
	Out	68.0	13	33	59	53	0	61	8	345.5	40	286	125	466.5	53	380	192	1091.5	1663.5	3698	
NOV	In	103.5	16	69	7	54	0	70	0	428.0	109	275	185	585.5	125	414	192	1316.5	1,922.5	5909	30148.5
	Out	121.0	103	65	62	54	0	70	0	449	88	304	124	624	191	439	186	1440	2,065.0	7066	
DEC	In	115	15.0	77	0	34	0.0	38	13	435	62.0	396	75	584	77	511	88	1,260	1859		34225
	Out	63.0	116.0	65	75	34.0	0	38	0	441.0	107.5	398	152	538.0	224	501	227	1,489.5	2,217.5		
TOTAL	In	1,208.5	200.5	817.0	25.0	406.0	0.0	428.0	21.0	3,629.0	754.0	2,932.0	1,233.0	5,243.5	954.5	4,177.0	1,279.0	11,654.0	17,110.0	63,707	
	Out	882.5	657.5	475.0	528.0	410.0	0.0	430.0	8.0	3,546.5	748.5	2,916.0	1,078.0	4,839.0	1,406.0	3,821.0	1,614.0	11,680.0	17,115.0	43,136	
THROUGHPUT		2,091.0	858.0	1,292.0	553.0	816.0	0.0	858.0	29.0	7,175.5	1,502.5	5,848.0	2,311.0	10,082.5	2,360.5	7,998.0	2,893.0	23,334.0	34,225.0	106,843	

SAINT LUCIA AIR & SEA PORTS AUTHORITY

MONTHLY CONTAINER STATISTICS AT PORT VIEUX FORT - 2009

TABLE 1.1309

MONTH		VIEUX - FORT DOMESTIC				CASTRIES DOMESTIC				TRANSHIPMENT				TOTALS						Vieux Fort Domestic Tonnage	YEAR TO DATE TOTAL
		20'		40'		20'		40'		20'		40'		20'		40'		BOXES	TEUS		
		FULL	MT	FULL	MT	FULL	MT	FULL	MT	FULL	MT	FULL	MT	FULL	MT	FULL	MT				
JANUARY	In	103	13	77	1	31	0	24	0	273	128	178	250	407	141	279	251	1,078	1,608	6,163	3,119
	Out	43	71	47	48	31	0	24	0	272	104	183	193	346	175	254	241	1,016	1,511	3,864	
FEBRUARY	In	84	0	50	0	18	0	31	0	242	98	161	84	344	98	242	84	768	1,094	4,294	5,484
	Out	39	61	30	62	19	0	31	0	234	126	158	115	292	187	219	177	875	1,271	2,645	
MARCH	In	117	6	88	0	22	0	10	0	278.5	79	171	78	418	85	269	78	849	1,196	6,855	7,761
	Out	53	47	35	59	16	0	8	0	225.5	88	151	73	294	135	194	132	755	1,081	2,911	
APRIL	In	99.0	12	57	0	51.0	0.0	21	0	66.0	53.0	30	51	216	65	108	51	440	599	4,949	8,996
	Out	73.0	57.0	36	64	46	0	13	0	80	42.5	30	26	199	99.5	79	90	467.0	636.0	3,937	
MAY	In	133.5	0	77	13.0	13.0	0.0	20	0	71.0	27.0	48	19	218	27	145	32	422	599	6,968	10,316
	Out	70.0	54.5	49	55	24	0	30	0	70	53	49	42	164	108	128	97	497	722	4,745	
JUNE	In	119.0	0.0	52	13	60	0	15	0	102	82	80	45	281	82	147	58	567.5	772.5	5,350	11,885
	Out	82.0	116	33	47	50	0	11	0	88	70	69	36	220.0	185	113	83	601.0	797.0	3,980	
JULY	In	170.5	0	60	21	27	0	6	0	80.5	58.0	65	46	278.0	58.0	131	67	534	732	6,862	13,422
	Out	90.0	73.0	56	39	37	0	10	0	85	72.0	68	51	211.5	145	134	90	580.5	804.5	5,397	
AUGUST	In	109.0	0	77	15	27	0	19	0	83.0	80.0	69	40	219.0	80	165	55	519.0	739.0	6,189	14,908
	Out	54.0	76	43	50	23.0	0	13	0	81.0	83.0	66	43	158.0	159.0	122	93	532	747	3,565	
SEPTEMBER	In	148	0	61	13	20	0	21	0	51.5	41	56	22	220	41	138	35	434	607	6,423	16,123
	Out	67	85.5	35	48	19	0	17	0	48	41.5	54	20	134	127.0	106	68	435.0	609.0	3,749	
OCTOBER	In	149.5	25.5	95	18	31.0	0.0	19	0	92.0	53.5	117	65	272.5	79	231	83	665.5	979.5	8,049	18,032
	Out	105.0	51	45	62	36	0	29	0	88.0	43	109	58	229	94	183	120	626	929	5,023	
NOVEMBER	In	125.0	1	75	28	31	0	26	0	80.0	45	114	34	236	46	215	62	559	836.0	6,435	19,685
	Out	77.0	55	51	56	29	0	26	0	73	39	112	27	179	94	189	83	545	817.0	4,716	
DECEMBER	In	151	0.0	82	12	15	0.0	22	0	134	62.0	143	71	300	62	247	83	692	1,022	7,552	21,756
	Out	59.0	111.0	28	60	17.0	0	22	0	124.5	72	143	80	200.5	183	193	140	716.5	1,049.5	2,872	
TOTALS	In	1,508.0	57.5	851.0	134.0	346.0	0.0	234.0	0.0	1,553.0	806.0	1,232.0	805.0	3,407.0	863.5	2,317.0	939.0	7,526.5	10,782.5	76,089.0	
	Out	811.5	857.5	488.0	650.0	347.0	0.0	234.0	0.0	1,468.0	833.5	1,192.0	764.0	2,626.5	1,691.0	1,914.0	1,414.0	7,645.5	10,973.5	47,404.0	
THROUGHPUT		2,319.5	915.0	1,339.0	784.0	693.0	0.0	468.0	0.0	3,021.0	1,639.5	2,424.0	1,569.0	6,033.5	2,554.5	4,231.0	2,353.0	15,172	21,756	123,493	

SAINT LUCIA AIR AND SEA PORTS AUTHORITY

MONTHLY GENERAL CARGO STATISTICS BY TYPE AT PORT VIEUX FORT - 2008

TABLE 1.1409

INBOUND/OUTBOUND

TONS

MONTH		Cement	Waste Paper	Paper Rolls	Aggregate	Lumber	Bananas	Tran-shipment	Other G. Cargoes	Petroleum Products	TOTALS	
											Monthly	Year To Date
January	IN	2,561	-	-	-	-	-	14	424	4,196	7,195	
	OUT	-	-	-	4,961	-	2,718	14	249	-	7,942	15,137
February	IN	2,949	0	0	0	0	0	0	106	2,815	5,870	
	OUT	0	0	0	0	0	2,664	0	316	0	2,980	23,987
March	IN	1,215	0	1,185	0	583	0	29	164	4,175	7,351	
	OUT	0	718	0	0	0	2,572	0	208	0	3,498	34,836
April	IN	1,171	0	0	0	0	0	11	337	1,841	3,360	
	OUT	0	0	0	20,397	0	3,929	9	323	0	24,658	62,854
May	IN	864	-	-	-	-	-	13	118	3,976	4,971	
	OUT	-	-	-	3,970	-	3,531	22	204	-	7,727	75,552
June	IN	1,705	0	1,372	0	95	0	2	105	1,965	5,244	
	OUT	0	0	0	8,820	0	3,419	2	263	0	12,504	93,300
July	IN	1,536	0	487	0	620	0	34	327	3,691	6,695	
	OUT	0	0	0	24,368	0	4,285	25	298	0	28,976	128,971
August	IN	1,990	0	0	0	0	0	1	189	3,049	5,229	
	OUT	0	467	0	30,652	0	3,249	33	267	0	34,668	168,868
September	IN	2,727	0	606	0	610	0	0	495	1,694	6,132	
	OUT	0	0	0	21,060	0	4,504	0	189	0	25,753	200,753
October	IN	1,045	0	926	0	0	0	625	99	1,312	4,007	
	OUT	0	0	0	15,547	0	3,841	513	263	0	20,164	224,924
November	IN	1,244	0	1,013	0	440	0	4	175	3,541	6,417	
	OUT	0	0	0	19,076	0	3,634	227	376	0	23,313	254,654
December	IN	1,533	0	954	0	322	0	23	386	2,879	6,097	
	OUT	0	0	0	4,852	0	4,395	26	222	0	9,495	270,246
TOTALS		20,540	0	6,543	0	2,670	0	756	2,925	35,134	68,568	
		0	1,185	0	153,703	0	42,741	871	3,178	0	201,678	
THROUGHPUT		20,540	1,185	6,543	153,703	2,670	42,741	1,627	6,103	35,134	270,246	

SAINT LUCIA AIR AND SEA PORTS AUTHORITY

MONTHLY GENERAL CARGO STATISTICS BY TYPE AT PORT VIEUX FORT - 2009

TABLE 1.1509

INBOUND/OUTBOUND

TONS

MONTH		Cement	Paper Rolls	Aggregate	Lumber	Bananas	Tran- Shipment	Other G. Cargoes	Petroleum Products	TOTALS	
										Monthly	Year To Date
January	IN	1,025	1,421	0	116	0	1	141	4,338	7,042	
	OUT	0	0	4,961	0	3,393	0	199	0	8,553	15,595
February	IN	2,108	0	0	0	0	-	208	2,001	4,317	
	OUT	0	0	0	0	2871	0	236	0	3,107	23,019
March	IN	1,531	1,477	-	300	-	3	155	4,213	7,679	
	OUT	0	0	0	0	2988	0	196	0	3,184	33,882
April	IN	1,278	-	-	628	-	-	95	3,910	5,911	
	OUT	-	-	12,128	-	2,604	-	264	-	14,996	54,789
May	IN	725	1,354	-	92	-	-	127	1,677	3,975	
	OUT	-	-	8,600	-	2,514	-	231	-	11,345	70,109
June	IN	2,174	1,257	-	304	-	4	234	2,954	6,927	
	OUT	-	-	-	-	2,830	-	198	-	3,028	80,064
July	IN	1,357	-	-	684	-	-	114	2,202	4,357	
	OUT	-	-	-	-	2,660	-	371	-	3,031	87,452
August	IN	1,979	-	-	-	-	-	114	3,143	5,236	
	OUT	-	-	2,756	-	2,703	-	322	-	5,781	98,469
September	IN	1,192	-	-	209	-	3	91	3,948	5,443	
	OUT	-	-	-	-	3,432	-	505	-	3,937	107,849
October	IN	494	1,719	-	277	-	4	290	1,390	4,174	
	OUT	-	-	-	-	2,967	-	455	-	3,422	115,445
November	IN	1,883	-	-	195	-	-	153	2,266	4,497	
	OUT	-	-	-	-	3,140	398	-	-	3,538	123,480
December	IN	1410	0	0	282	0	130	352	2638	4,812	
	OUT	0	0	0	0	3996	130	380	35	4,541	132,833
TOTALS		17,156	7,228	0	3,087	0	145	2,074	34,680	64,370	
		0	0	28,445	0	36,098	528	3,357	35	68,463	
THROUGHPUT		17,156	7,228	28,445	3,087	36,098	673	5,431	34,715	132,833	

SAINT LUCIA AIR & SEA PORTS AUTHORITY

VESSEL STATISTICS BY TYPE (2008)

TABLE 1:1609

PORT: VIEUX FORT

TYPE OF VESSEL/SHIP	TOTAL GROSS TONNAGE (GRT)	TOTAL NET TONNAGE (NRT)	AVERAGE GROSS TONNAGE	NUMBER OF VESSEL CALLS
CARGO VESSELS UNDER 100 GRT	3,261	2,097	98.82	33
CONVENTIONAL BREAK BULK VESSELS	92,526	41,061	826.13	112
CONTAINER SHIPS	1,449,813	717,092	4,800.71	302
COMBINATION SHIPS	540,716	287,413	9,486.25	57
PRODUCT TANKERS	239,100	91,039	4,511.32	53
TUG & BARGE	62,035	18,334	1,676.62	37
CRUISE SHIPS - Regional			0.00	0
CRUISE SHIPS - International			0.00	0
TUG	2,114	628	162.62	13
NAVAL			0.00	0
OTHER	7,534	2,263	3,767.00	2
TOTALS	2,397,099	1,159,927	3,936.12	609

SAINT LUCIA AIR & SEA PORTS AUTHORITY

VESSEL STATISTICS BY TYPE (2009)

TABLE 1:1709

PORT: VIEUX FORT

TYPE OF VESSEL/SHIP	TOTAL GROSS	TOTAL NET	AVERAGE GROSS TONNAGE	NUMBER OF VESSEL CALLS
CARGO VESSELS UNDER 100 GRT	1,683	1,076	99.00	17
CONVENTIONAL BREAK BULK VESSELS	28,986	13,533	1,207.75	24
CONTAINER SHIPS	473,377	234,160	4,931.01	96
COMBINATION SHIPS	158,130	84,711	9,301.76	17
PRODUCT TANKERS	75,442	28,555	4,715.13	16
TUG & BARGE	7,434	3,651	1,858.50	4
CRUISE SHIPS - Regional				
CRUISE SHIPS - International				
TUG	450	135	150.00	3
NAVAL				
OTHERS				
TOTALS	745,502	365,821	4,211.88	177

2009 updated until April

SAINT LUCIA AIR & SEA PORTS AUTHORITY

TOTAL CARGO TRAFFIC IMPORTS & EXPORTS - TONNAGES
2002 - 2009

TABLE 1:1809 A

PORT: CASTRIES & VIEUX FORT

(short tons)

YEAR	CASTRIES			VIEUX FORT			GRAND TOTALS			GROWTH (%)
	IMPORT	EXPORT	TOTAL	IMPORT	EXPORT	TOTAL	IMPORT	EXPORT	TRAFFIC	
2002	425,501	18,749	444,250	69,556	61,268	130,824	495,057	80,017	575,074	0.0
2003	456,909	15,509	472,418	60,199	68,993	129,192	517,108	84,502	601,610	4.6
2004	541,875	13,855	555,730	75,889	158,517	234,406	617,764	172,372	790,136	31.3
2005	547,233	14,527	561,760	68,334	96,161	164,495	615,567	110,688	726,255	(8.1)
2006	600,155	15,957	616,112	76,833	75,574	152,407	676,988	91,531	768,519	5.8
2007	576,898	19,752	596,650	69,538	126,512	196,050	646,436	146,264	792,700	3.1
2008	514,648	22,213	536,861	68,568	201,678	270,246	583,216	223,891	807,107	1.8
2009	427,326	20,220	447,546	64,370	68,463	132,833	491,696	88,683	580,379	(28.1)

TABLE 1:1809 B

TOTAL CARGO TRAFFIC IMPORTS & EXPORTS - TEUS

PORT: CASTRIES & VIEUX FORT

YEAR	CASTRIES			VIEUX FORT			GRAND TOTALS			GROWTH (%)
	IMPORT	EXPORT	TOTAL	IMPORT	EXPORT	TOTAL	IMPORT	EXPORT	TRAFFIC	
2002	11,550	11,517	23,067	7,527	7,414	14,941	19,077	18,931	38,008	0.0
2003	11,537	11,085	22,622	7,490	5,975	13,465	19,027	17,060	36,087	(5.1)
2004	13,095	11,861	24,956	9,823	9,159	18,982	22,918	21,020	43,938	21.8
2005	14,882	14,785	29,667	15,292	15,768	31,060	30,174	30,553	60,727	38.2
2006	16,638	15,474	32,112	12,147	12,007	24,154	28,785	27,481	56,266	(7.3)
2007	18,649	17,468	36,117	9,341	10,123	19,464	27,990	27,591	55,581	(8.5)
2008	17,989	17,988	35,977	17,110	17,115	34,225	35,099	35,103	70,202	26.3
2009	15,055	15,131	30,186	10,783	10,974	21,756	25,838	26,105	51,942	(26.0)

Castries Seaport and Port Vieux Fort updated until December 2009

SAINT LUCIA AIR & SEA PORTS AUTHORITY
MONTHLY AIRCRAFT MOVEMENTS BY TYPE 2009

TABLE 2:209

AIRPORT: GEORGE.F.L.CHARLES

AIRCRAFT TYPE	JAN	FEB	MAR	APRIL	MAY	JUNE	JULY	AUG	SEPT	OCT	NOV	DEC	Total		
													2008	2009	GROWTH (%)
DH8 A&C	756	692	744	730	740	710	755	770	704	700	699	758	8,777	8,758	(0.2)
DHC6	0	0	0	0	0	2	0	6	0	0	0	0	717	8	(98.9)
D228	0	0	0	0	0	0	0	0	0	0	0	0	12	0	(100.0)
BN2	53	47	45	47	28	6	19	45	21	35	39	45	687	430	(37.4)
ATR 42	2	0	0	2	2	4	0	0	0	0	0	0	0	10	#DIV/0!
ATR 43	0	0	0	0	0	0	0	0	0	0	0	0	22	0	(100.0)
ATR 45	2	0	0	2	6	2	0	10	4	2	2	0	4	30	650.0
ATR 72	150	138	140	136	142	120	130	138	108	122	118	124	2,845	1,566	(45.0)
GEN.AVIATION	1,115	898	1,114	1,039	901	940	852	857	781	870	939	1,106	13,627	11,412	301.1
TOTALS	2,078	1,775	2,043	1,956	1,819	1,784	1,756	1,826	1,618	1,729	1,797	2,033	26,691	22,214	(16.8)

SAINT LUCIA AIR & SEA PORTS AUTHORITY
MONTHLY AIRCRAFT MOVEMENTS 2008 - 2009

TABLE 2:409

AIRPORT: GEORGE.F.L.CHARLES

MONTH	SCHEDULED			NON - SCHEDULED			OTHER			TOTAL		
	2008	2009	Growth %	2008	2009	Growth %	2008	2009	Growth %	2008	2009	Growth %
JANUARY	1,110	906	(18.4)	1,239	1,012	(18.3)	125	158	26.4	2,474	2,076	(16.1)
FEBRUARY	1,037	824	(20.5)	1,187	844	(28.9)	123	107	(13.0)	2,347	1,775	(24.4)
MARCH	1,110	882	(20.5)	1,213	956	(21.2)	213	205	(3.8)	2,536	2,043	(19.4)
APRIL	1,083	850	(21.5)	1,131	944	(16.5)	151	162	7.3	2,365	1,956	(17.3)
MAY	1,123	852	(24.1)	1,165	809	(30.6)	226	158	(30.1)	2,514	1,819	(27.6)
JUNE	1,224	824	(32.7)	928	754	(18.8)	117	206	76.1	2,269	1,784	(21.4)
JULY	1,167	869	(25.5)	1,028	740	(28.0)	122	147	20.5	2,317	1,756	(24.2)
AUGUST	1,016	894	(12.0)	977	753	(22.9)	166	179	7.8	2,159	1,826	(15.4)
SEPTEMBER	856	808	(5.6)	770	705	(8.4)	130	105	(19.2)	1,756	1,618	(7.9)
OCTOBER	871	818	(6.1)	824	770	(6.6)	102	141	38.2	1,797	1,729	(3.8)
NOVEMBER	873	809	(7.3)	941	897	(4.7)	161	91	(43.5)	1,975	1,797	(9.0)
DECEMBER	939	870	(7.3)	1,057	1,002	(5.2)	186	161	(13.4)	2,182	2,033	(6.8)
TOTALS	12,409	10,206	(17.8)	12,460	10,186	(18.3)	1,822	1,820	(0.1)	26,691	22,212	(16.8)

The cargo and freight are accounted for in the scheduled and non-scheduled

SAINT LUCIA AIR & SEA PORTS AUTHORITY

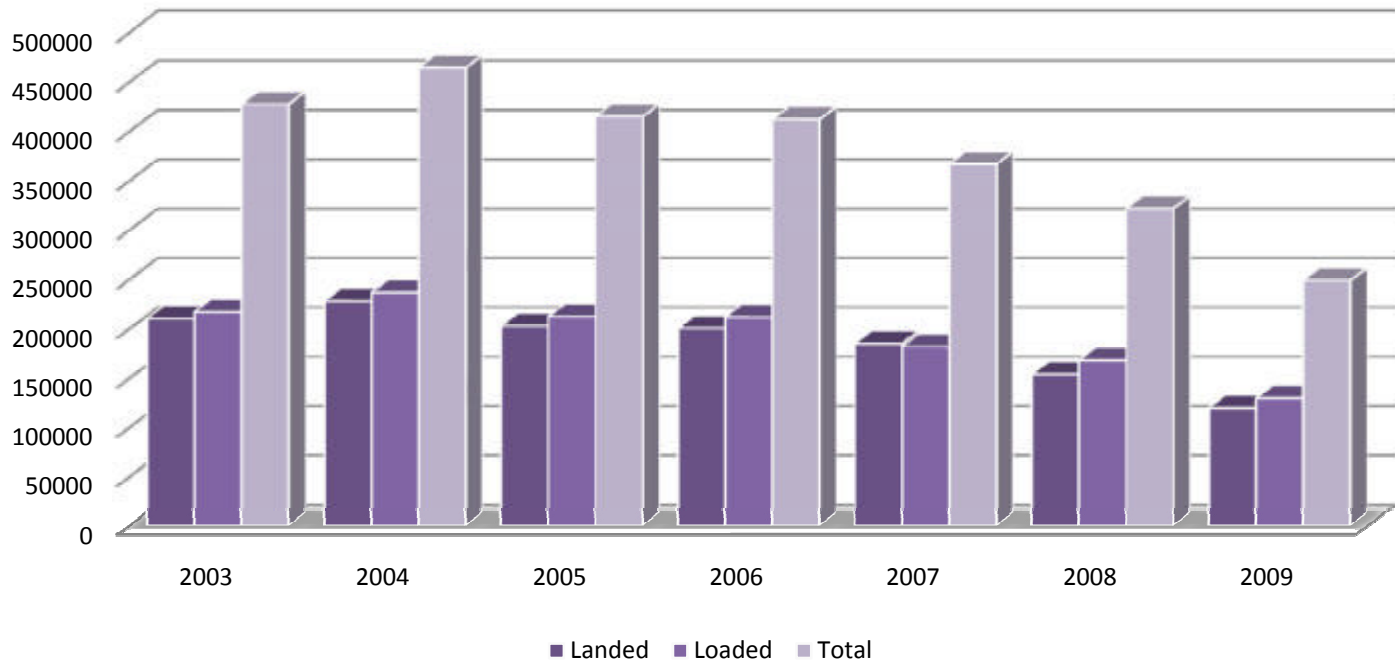
PASSENGER TRAFFIC 2008-2009

TABLE 2:609

AIRPORT: GEORGE.F.L.CHARLES

MONTH	PASSENGERS EMBARKED	PASSENGERS DISEMBARKED	PASSENGERS INTRANSIT	TOTAL PASS.HANDLED		GROWTH (%)
				2008	2009	
JANUARY	11,806	9,574	5,138	31,717	26,518	(16.4)
FEBRUARY	9,674	9,046	4,877	31,271	23,597	(24.5)
MARCH	9,637	8,970	4,880	36,284	23,487	(35.3)
APRIL	12,351	11,725	4,802	34,419	28,878	(16.1)
MAY	10,983	10,545	4,944	38,009	26,472	(30.4)
JUNE	9,415	8,959	5,003	32,011	23,377	(27.0)
JULY	12,298	11,057	6,822	38,761	30,177	(22.1)
AUGUST	14,019	11,832	7,820	37,994	33,671	(11.4)
SEPTEMBER	8,616	8,091	3,958	22,398	20,665	(7.7)
OCTOBER	10,326	10,195	3,759	27,470	24,280	(11.6)
NOVEMBER	9,754	8,687	4,166	26,870	22,607	(15.9)
DECEMBER	10,526	10,921	5,859	29,353	27,306	(7.0)
TOTALS	129,405	119,602	62,028	386,557	311,035	(19.5)

Chart 2.309
Passenger Traffic- GFLC



2009 Updated until December 2009

SAINT LUCIA AIR & SEA PORTS AUTHORITY

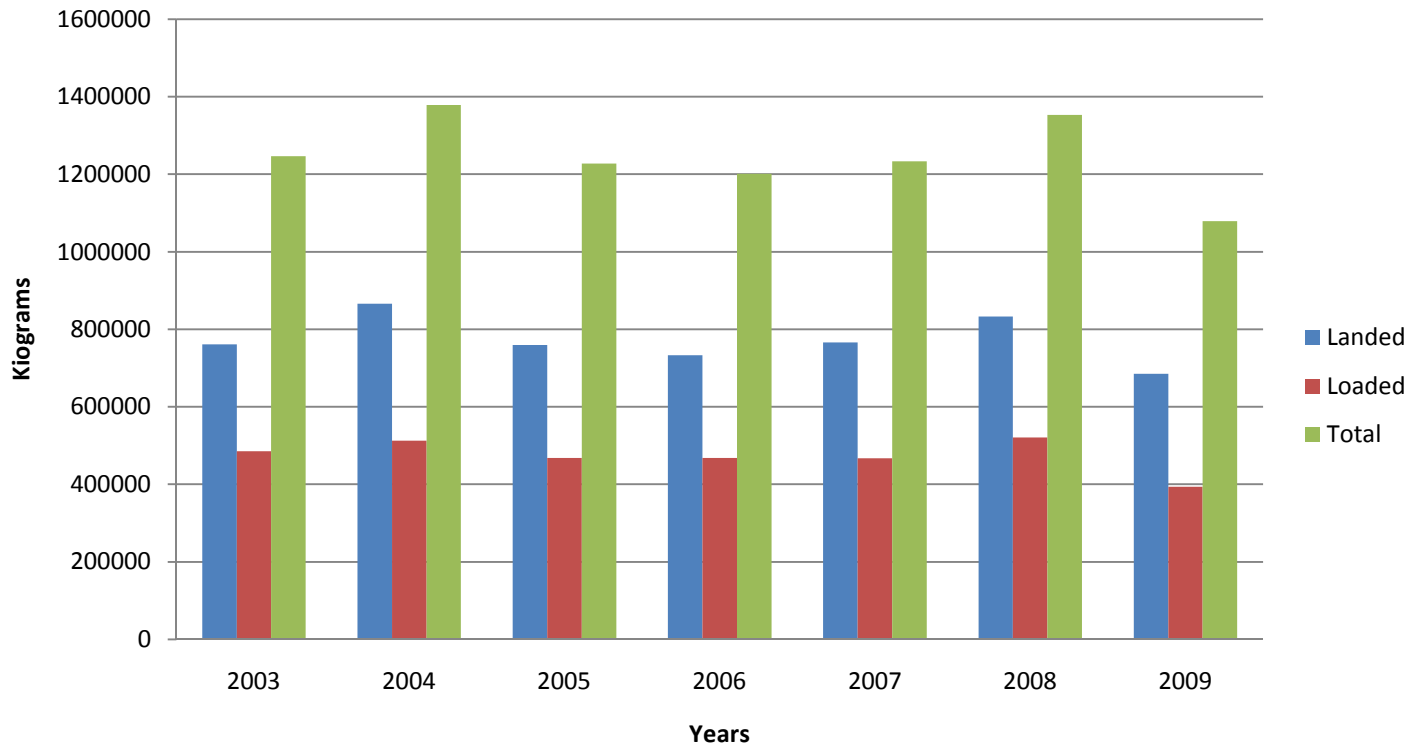
CARGO TRAFFIC 2008-2009

TABLE 2:909

AIRPORT: GEORGE .F.L.CHARLES

MONTH	CARGO LOADED	CARGO UNLOADED	TOTAL CARGO HANDLED		GROWTH (%)
			2008	2009	
JANUARY	32,116	51,360	113,000	83,476	(26.1)
FEBRUARY	23,761	45,548	98,672	69,309	(29.8)
MARCH	29,699	50,194	102,786	79,893	(22.3)
APRIL	31,127	44,692	123,105	75,819	(38.4)
MAY	27,559	47,428	107,272	74,987	(30.1)
JUNE	27,126	50,344	136,099	77,470	(43.1)
JULY	31,577	60,351	108,540	91,928	(15.3)
AUGUST	27,574	54,775	105,034	82,349	(21.6)
SEPTEMBER	38,585	71,189	113,783	109,774	(3.5)
OCTOBER	41,972	75,448	113,570	117,420	3.4
NOVEMBER	47,984	69,384	116,377	117,368	0.9
DECEMBER	34,722	64,389	114,942	99,111	(13.8)
TOTALS	393,802	685,102	1,353,180	1,078,904	(20.3)

Chart 2.409
Aiport Cargo Traffic- GFLC



2009 updated until December

SAINT LUCIA AIR & SEA PORTS AUTHORITY

MONTHLY AIRCRAFT MOVEMENTS BY TYPE 2009

TABLE 2:109

AIRPORT: Hewanorra International Airport

AIRCRAFT TYPE	JAN	FEB	MAR	APRIL	MAY	JUNE	JULY	AUG	SEPT	OCT	NOV	DEC	TOTAL		GROWTH (%)
													2009	2008	
A300's	74	62	60	42	24	22	18	20	10	12	54	70	468	1,008	-54%
B722	12	12	18	18	18	18	16	16	12	16	20	20	196	194	1%
B763/762	0	2	2	0	0	0	0	0	0	0	10	8	22	78	-72%
B772	52	48	58	52	51	50	54	52	52	60	84	91	704	144	389%
B744	36	32	34	24	28	26	26	26	26	26	26	26	336	350	-4%
B737/738	128	128	138	169	158	108	106	92	66	78	94	115	1,380	1,420	-3%
B732	0	2	0	8	0	0	0	0	0	0	0	0	10	26	-62%
BN2	40	34	24	4	20	4	17	16	6	4	30	36	235	436	-46%
DHC6	10	0	10	6	4	0	4	8	6	4	4	8	64	118	-46%
B752	40	42	76	28	24	32	38	28	18	16	36	52	430	50	760%
DHC8	0	2	0	0	10	0	0	0	0	0	2	0	14	2	600%
OTHERS	716	578	659	615	470	468	460	452	354	396	436	615	6,219	8,398	-26%
TOTALS	1,108	942	1,079	966	807	728	739	710	550	612	796	1,041	10,078	12,224	-18%

SAINT LUCIA AIR & SEA PORTS AUTHORITY

MONTHLY AIRCRAFT MOVEMENTS 2008 -2009

TABLE 2:309

AIRPORT: HEWANORRA

MONTH	SCHEDULED			NON - SCHEDULED			OTHER			TOTAL		
	2008	2009	Growth %	2008	2009	Growth %	2008	2009	Growth %	2008	2009	Growth %
JANUARY	342	286	(16.4)	902	658	(27.1)	148	164	10.8	1,392	1,108	(20.4)
FEBRUARY	359	274	(23.7)	864	552	(36.1)	101	116	14.9	1,324	942	(28.9)
MARCH	326	312	(4.3)	928	700	(24.6)	182	67	(63.2)	1,436	1,079	(24.9)
APRIL	214	275	28.5	750	592	(21.1)	115	99	(13.9)	1,079	966	(10.5)
MAY	214	271	26.6	718	467	(35.0)	65	66	1.5	997	804	(19.4)
JUNE	313	234	(25.2)	588	438	(25.5)	58	56	(3.4)	959	728	(24.1)
JULY	295	240	(18.6)	606	429	(29.2)	82	70	(14.6)	983	739	(24.8)
AUGUST	202	218	7.9	582	430	(26.1)	96	62	(35.4)	880	710	(19.3)
SEPTEMBER	144	172	19.4	428	318	(25.7)	44	60	36.4	616	550	(10.7)
OCTOBER	150	188	25.3	442	370	(16.3)	34	54	58.8	626	612	(2.2)
NOVEMBER	205	292	42.4	518	456	(12.0)	84	48	(42.9)	807	796	(1.4)
DECEMBER	250	350	40.0	662	588	(11.2)	131	103	(21.4)	1,043	1,041	(0.2)
TOTALS	3,014	3,112	3.3	7,988	5,998	(24.9)	1,140	965	(15.4)	12,142	10,075	(17.0)

SAINT LUCIA AIR & SEA PORTS AUTHORITY

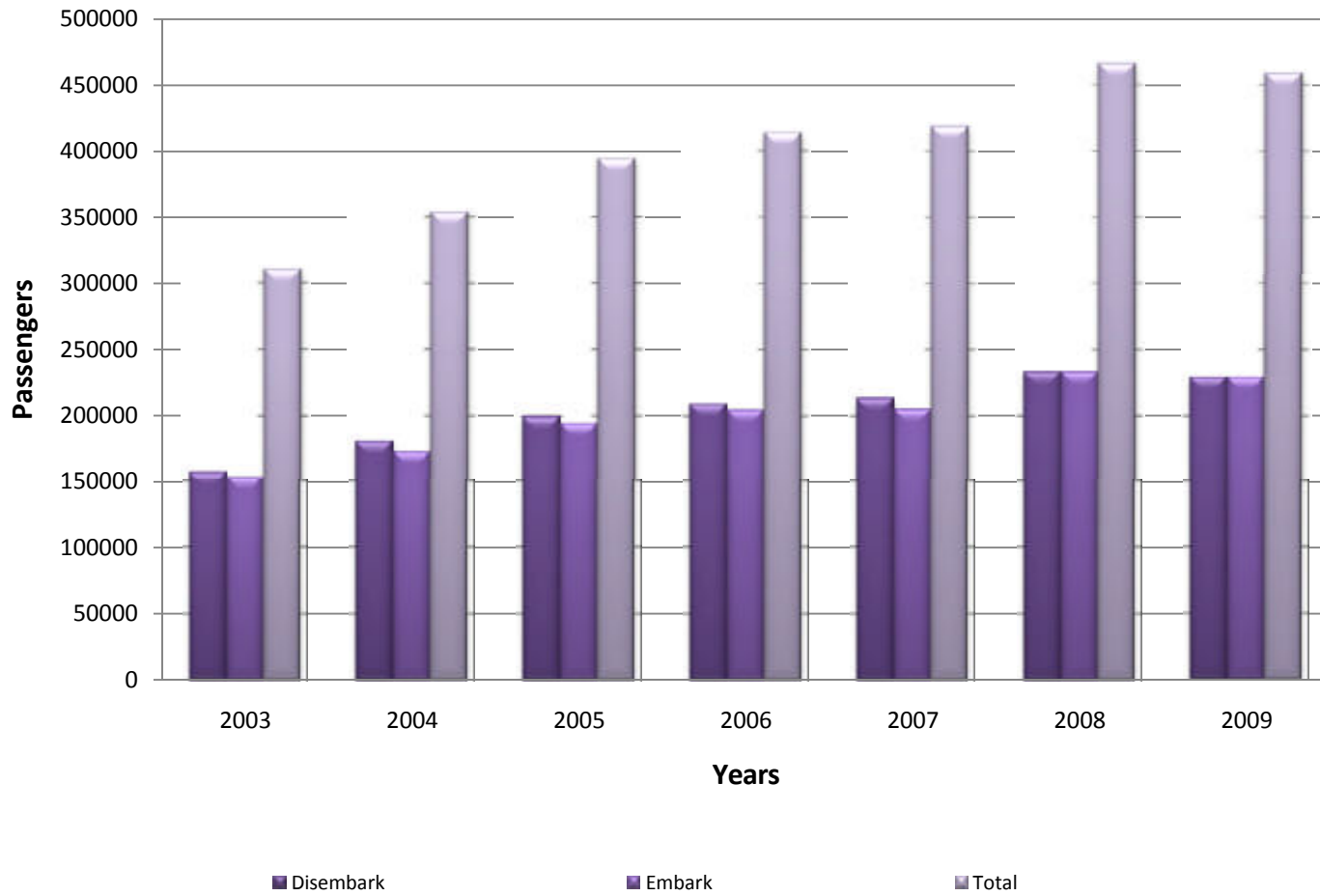
PASSENGER TRAFFIC 2008-2009

TABLE 2:509

AIRPORT: HEWANORRA

MONTH	PASSENGERS EMBARKED	PASSENGERS DISEMBARKED	PASSENGERS INTRANSIT	TOTAL PASS.HANDLED		GROWTH (%)
				2008	2009	
JANUARY	23,025	20,062	3,910	47,198	46,997	(0.4)
FEBRUARY	20,988	20,989	3,676	52,078	45,653	(12.3)
MARCH	23,845	23,211	4,482	53,055	51,538	(2.9)
APRIL	22,356	21,005	3,394	40,433	46,755	15.6
MAY	19,867	19,110	4,340	39,654	43,317	9.2
JUNE	16,717	17,376	4,156	36,819	38,249	3.9
JULY	18,849	19,604	5,350	41,610	43,803	5.3
AUGUST	19,921	16,750	5,008	37,830	41,679	10.2
SEPTEMBER	12,042	12,512	4,202	25,117	28,756	14.5
OCTOBER	12,999	14,310	4,522	29,934	31,831	6.3
NOVEMBER	18,940	19,664	6,075	38,373	44,679	16.4
DECEMBER	19,897	25,226	6,730	43,374	51,853	19.5
TOTALS	229,446	229,819	55,845	485,475	515,110	6.1

Chart 2.109
Passenger Traffic at HIA



2009 Updated until December

SAINT LUCIA AIR & SEA PORTS AUTHORITY

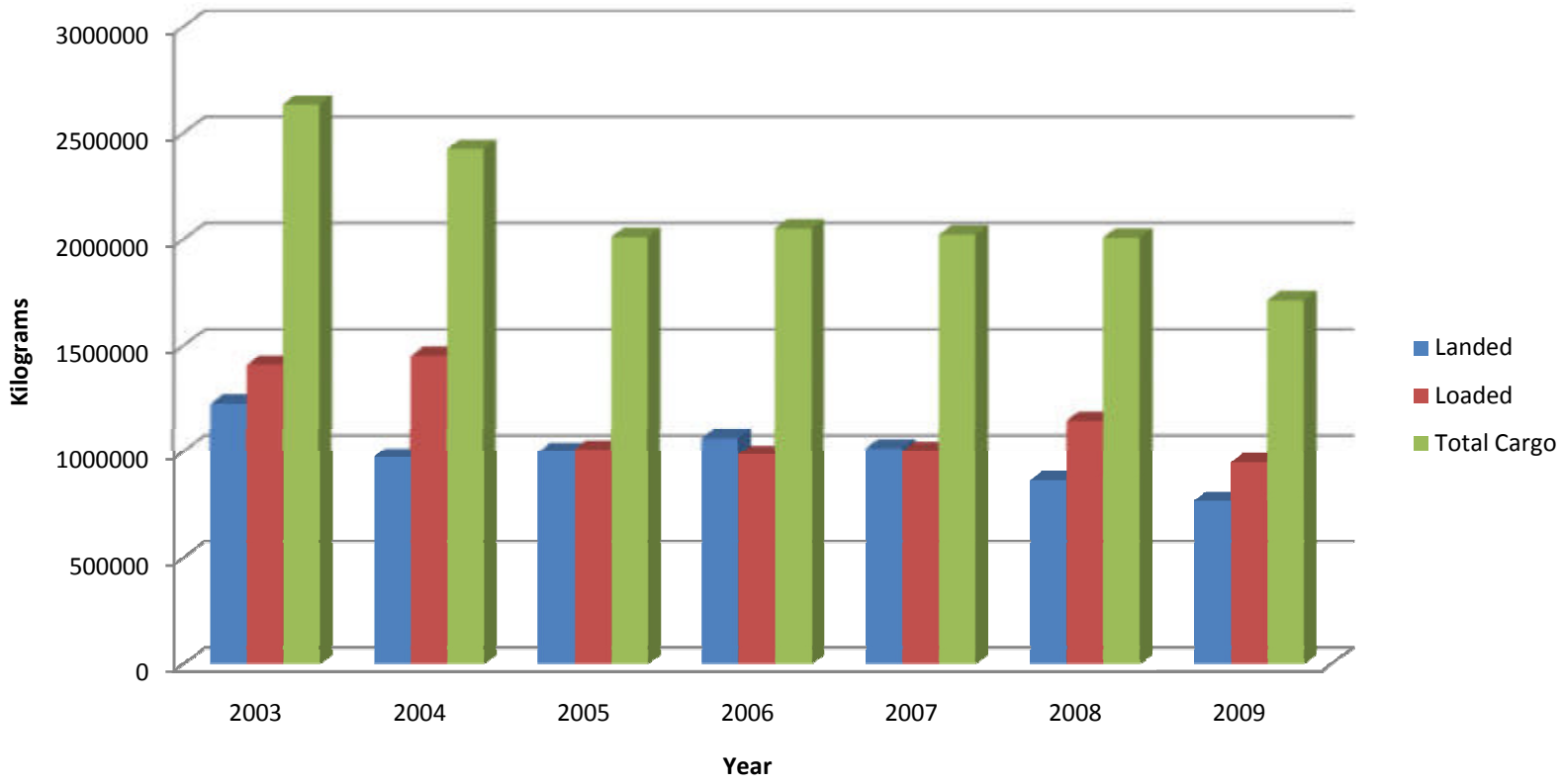
CARGO TRAFFIC 2008-2009

TABLE 2:809

AIRPORT: HEWANORRA

MONTH	CARGO LOADED	CARGO UNLOADED	TOTAL CARGO HANDLED		GROWTH (%)
			2008	2009	
JANUARY	21,258	53,758	121,499	75,016	(38.3)
FEBRUARY	18,388	52,985	144,629	71,373	(50.7)
MARCH	54,766	69,604	118,810	124,370	4.7
APRIL	70,824	60,149	167,661	130,973	(21.9)
MAY	88,155	64,805	164,387	152,960	(7.0)
JUNE	78,710	70,525	194,500	149,235	(23.3)
JULY	97,687	68,904	211,529	166,591	(21.2)
AUGUST	159,099	43,918	184,224	203,017	10.2
SEPTEMBER	98,406	54,753	144,820	153,159	5.8
OCTOBER	100,274	59,712	172,685	159,986	(7.4)
NOVEMBER	118,877	73,721	243,738	192,598	(21.0)
DECEMBER	41,407	92,539	141,409	133,946	(5.3)
TOTALS	947,851	765,374	2,009,891	1,713,225	(14.8)

Chart 2.209
Airport Cargo Traffic- HIA



2009 Updated until December

SAINT LUCIA AIR & SEA PORTS AUTHORITY

TRAFFIC (2003 - 2009)

TABLE 2:1109

AIRPORT: HEWANORRA

YEAR	NO.OF MOVEMENTS	DISEMBARKED/UNLOADED		EMBARKED/LOADED		TOTAL	
		PASSENGERS	CARGO (Kg)	PASSENGERS	CARGO (Kg)	PASSENGERS	CARGO (Kg)
2003	9,036	157,186	1,227,125	153,421	1,409,160	310,607	2,636,285
2004	9,947	180,875	974,807	173,240	1,451,917	354,115	2,426,724
2005	11,939	199,617	999,721	194,732	1,013,090	394,349	2,012,811
2006	12,969	209,085	1,065,569	204,876	987,189	413,961	2,052,758
2007	12,224	213,527	1,019,147	205,251	1,004,892	418,778	2,024,039
2008	12,042	233,024	861,649	233,205	1,148,242	466,229	2,009,891
2009	10,078	229,819	765,375	229,446	947,851	459,265	1,713,226

SAINT LUCIA AIR & SEA PORTS AUTHORITY

TRAFFIC (2003 - 2009)

TABLE 2:1209

AIRPORT: GEORGE.F.L.CHARLES

YEAR	NO.OF MOVEMENTS	DISEMBARKED/UNLOADED		EMBARKED/LOADED		TOTAL	
		PASSENGERS	CARGO (Kg)	PASSENGERS	CARGO (Kg)	PASSENGERS	CARGO (Kg)
2003	32,778	210,561	761,217	216,919	485,412	427,480	1,246,629
2004	35,580	227,866	865,911	236,584	512,908	464,450	1,378,819
2005	32,522	202,855	759,163	212,136	468,133	414,991	1,227,296
2006	34,860	200,404	733,351	211,738	468,201	412,142	1,201,552
2007	28,203	184,986	766,216	181,756	466,946	366,742	1,233,163
2008	26,691	153,926	832,617	167,970	520,563	321,896	1,353,180
2009	22,223	119,602	685,102	129,405	393,802	249,007	1,078,904

SAINT LUCIA AIR & SEA PORTS AUTHORITY

TOTAL PASSENGER TRAFFIC 2008-2009

TABLE 2:709

AIRPORT: HEWANORRA & GEORGE.F.L.CHARLES

MONTH	PASSENGERS EMBARKED	PASSENGERS DISEMBARKED	INTRANSIT PASSENGERS	TOTAL PASS.HANDLED		GROWTH (%)
				2008	2009	
JANUARY	34,831	29,636	9,048	78,915	73,515	(6.84)
FEBRUARY	30,662	30,035	8,553	83,349	69,250	(16.92)
MARCH	33,482	32,181	9,362	89,339	75,025	(16.02)
APRIL	34,707	32,730	8,196	74,852	75,633	1.04
MAY	30,850	29,655	9,284	77,663	69,789	(10.14)
JUNE	26,132	26,335	9,159	68,830	61,626	(10.47)
JULY	31,147	30,661	12,172	80,371	73,980	(7.95)
AUGUST	33,940	28,582	12,828	75,824	75,350	(0.63)
SEPTEMBER	20,658	20,603	8,160	47,515	49,421	4.01
OCTOBER	23,325	24,505	8,281	57,404	56,111	(2.25)
NOVEMBER	28,694	28,351	10,241	65,243	67,286	3.13
DECEMBER	30,423	36,147	12,589	72,727	79,159	8.84
TOTALS	358,851	349,421	117,873	872,032	826,145	(5.26)

SAINT LUCIA AIR & SEA PORTS AUTHORITY

CARGO TRAFFIC 2008-2009

TABLE 2:1009

AIRPORT: HEWANORRA & GEORGE.F.L.CHARLES

MONTH	CARGO LOADED	CARGO UNLOADED	TOTAL CARGO HANDLED		GROWTH (%)
			2008	2009	
JANUARY	53,374	105,118	234,498	158,492	(32.4)
FEBRUARY	42,149	98,532	243,301	140,681	(42.2)
MARCH	84,465	119,798	221,596	204,263	(7.8)
APRIL	115,516	104,840	290,766	220,356	(24.2)
MAY	115,714	112,233	271,659	227,947	(16.1)
JUNE	105,836	120,870	330,599	226,706	(31.4)
JULY	129,264	129,254	320,069	258,518	(19.2)
AUGUST	186,673	98,693	289,257	285,366	(1.3)
SEPTEMBER	136,991	125,942	258,603	262,933	1.7
OCTOBER	142,246	135,161	286,255	277,407	(3.1)
NOVEMBER	166,861	143,105	360,115	309,966	(13.9)
DECEMBER	76,129	156,928	256,351	233,057	(9.1)
TOTALS	1,355,218	1,450,476	3,363,071	2,805,693	(16.6)